

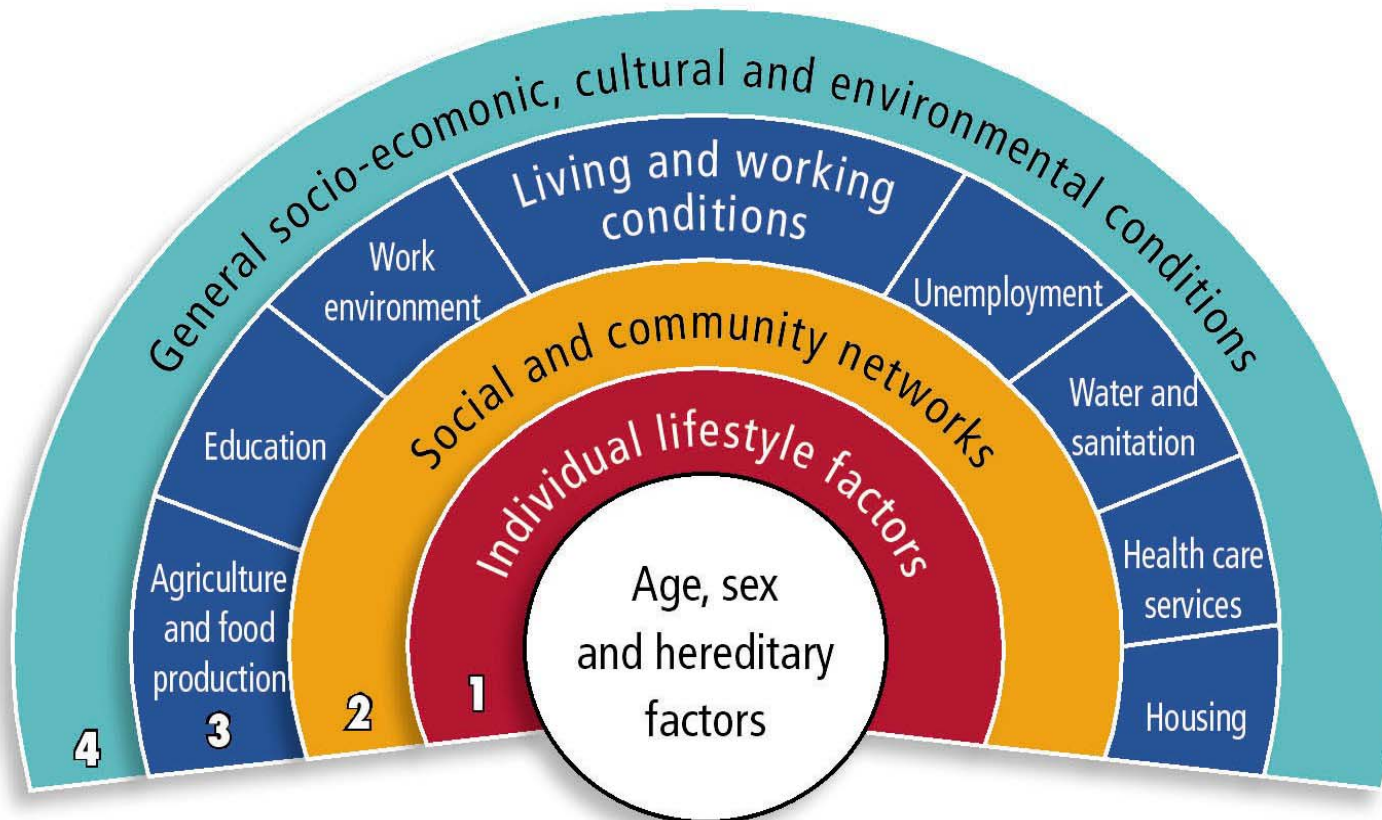
# City Health Development Planning

Izmir: September 07

Prof. Geoff Green  
CRESR, Sheffield Hallam  
University

# Social Model of Health

Dalgren & Whitehead: WHO, 1992



# Typology of Actions

Whitehead. JECH.2007

---

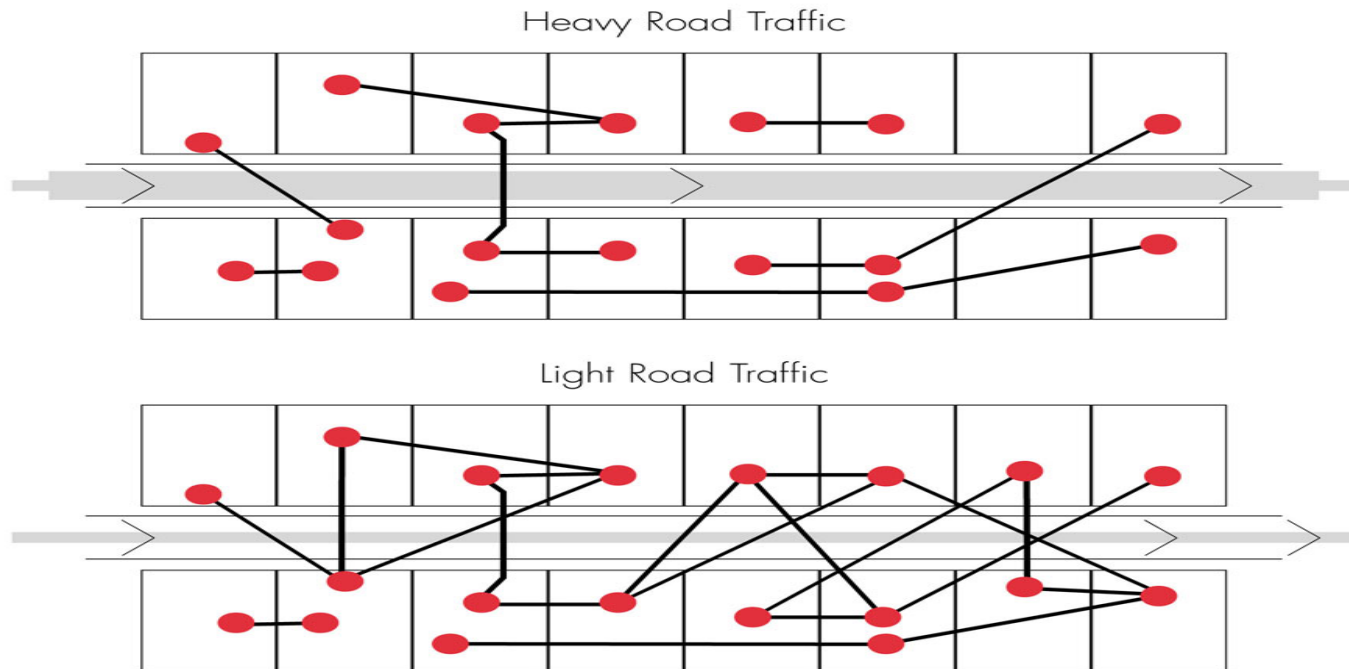
- Strengthening Individuals
- Strengthening Communities
- Improving Living and Working Conditions
- Promoting Healthy Macro-policies

# Intervention 1

## Street Life & Social Capital

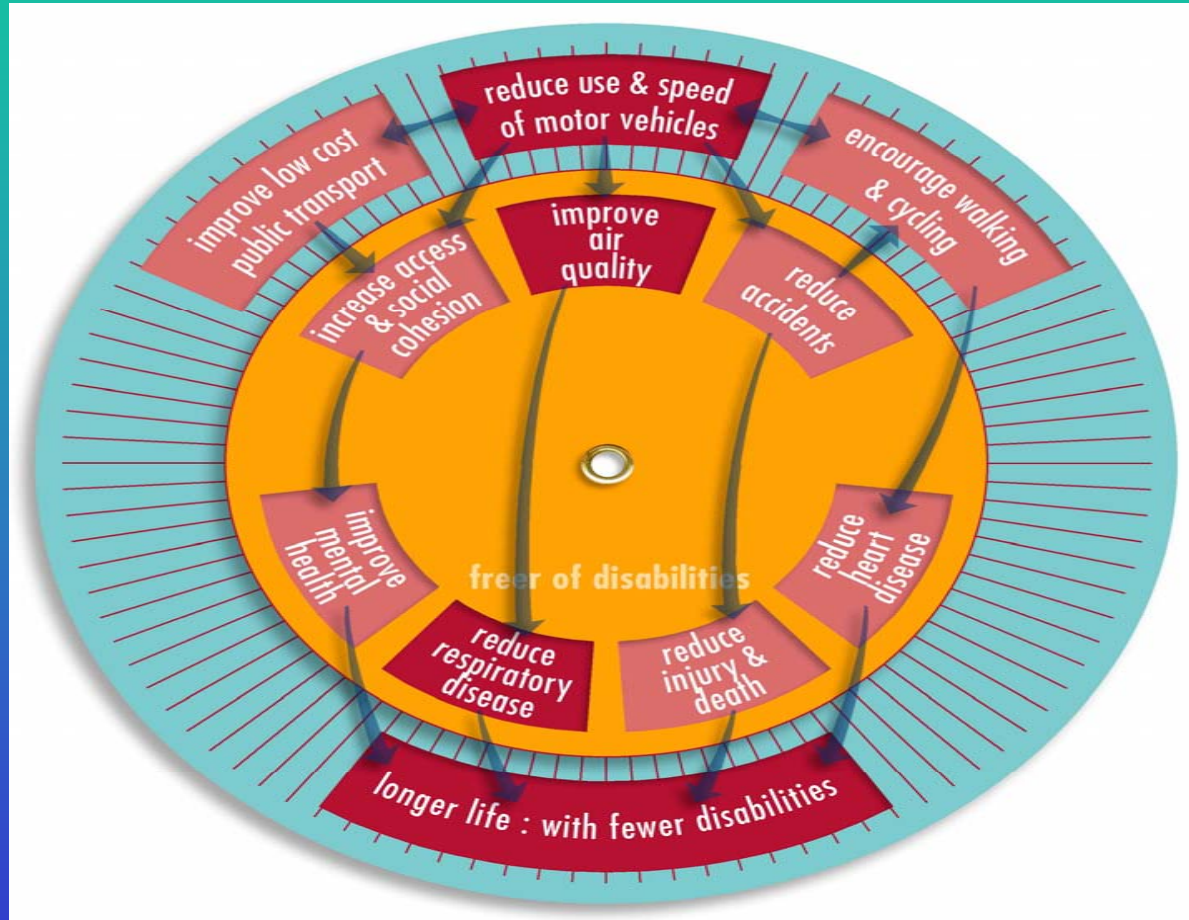
Urban Task Force: 1999

Figure 8.2: **Contact between neighbours in two housing blocks**



# Impact of Transport Interventions

Acheson: 1998

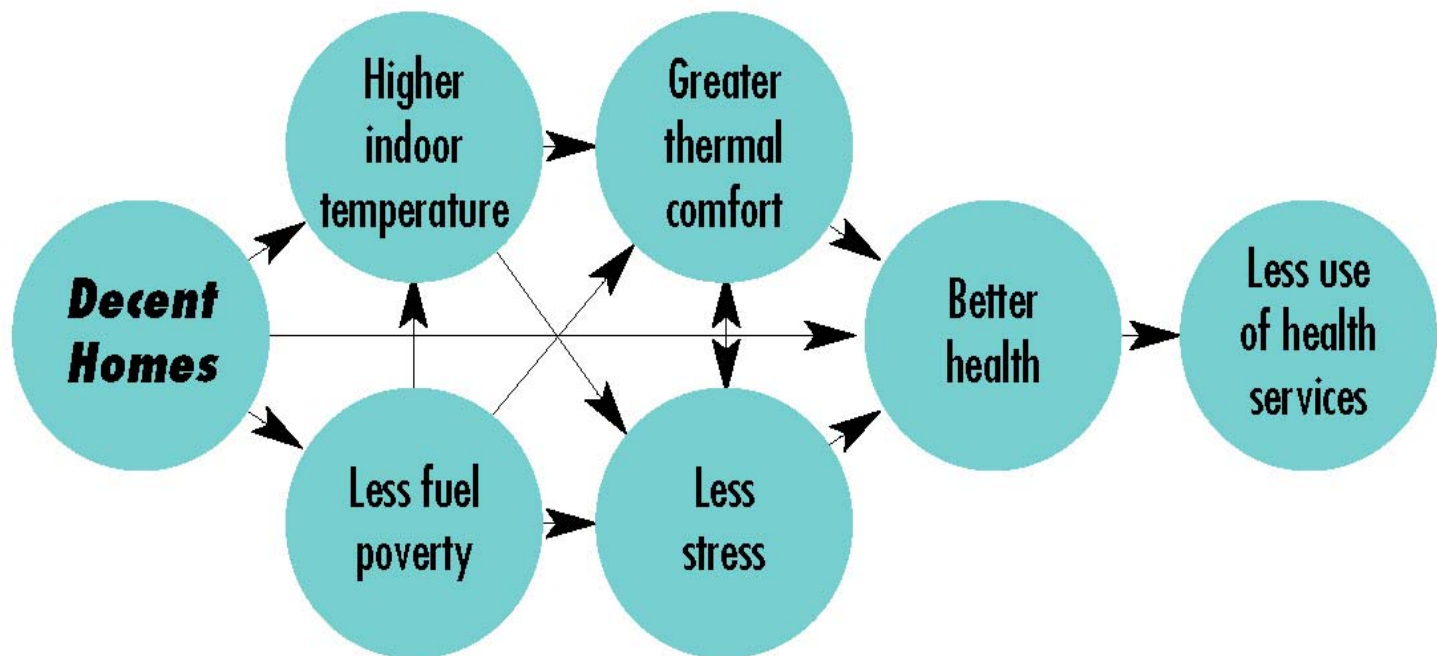


# Intervention 2

## Housing Investment

Gilbertson, Green & Ormandy: 2006

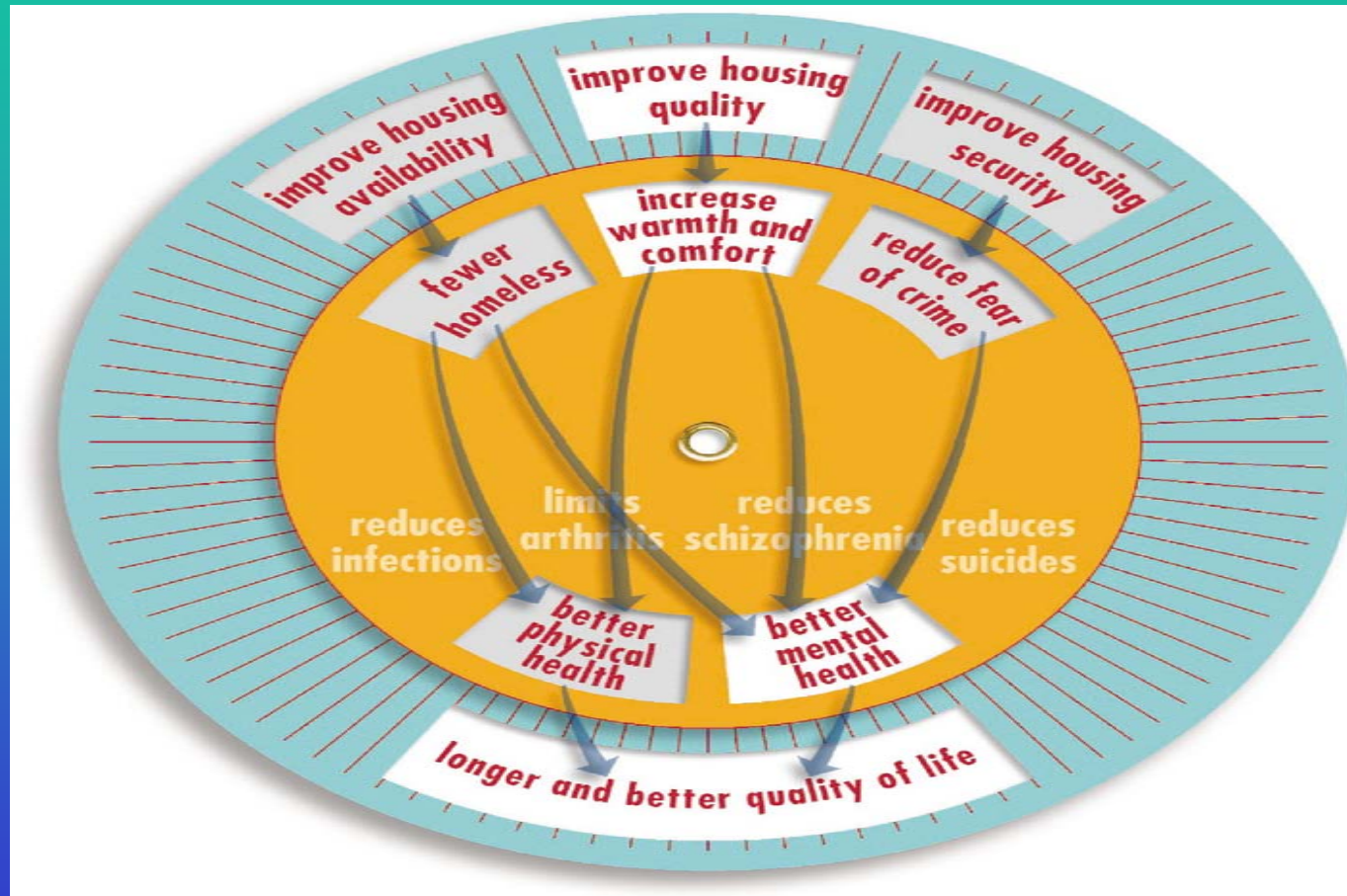
Figure 4.1: **Possible pathways to health**





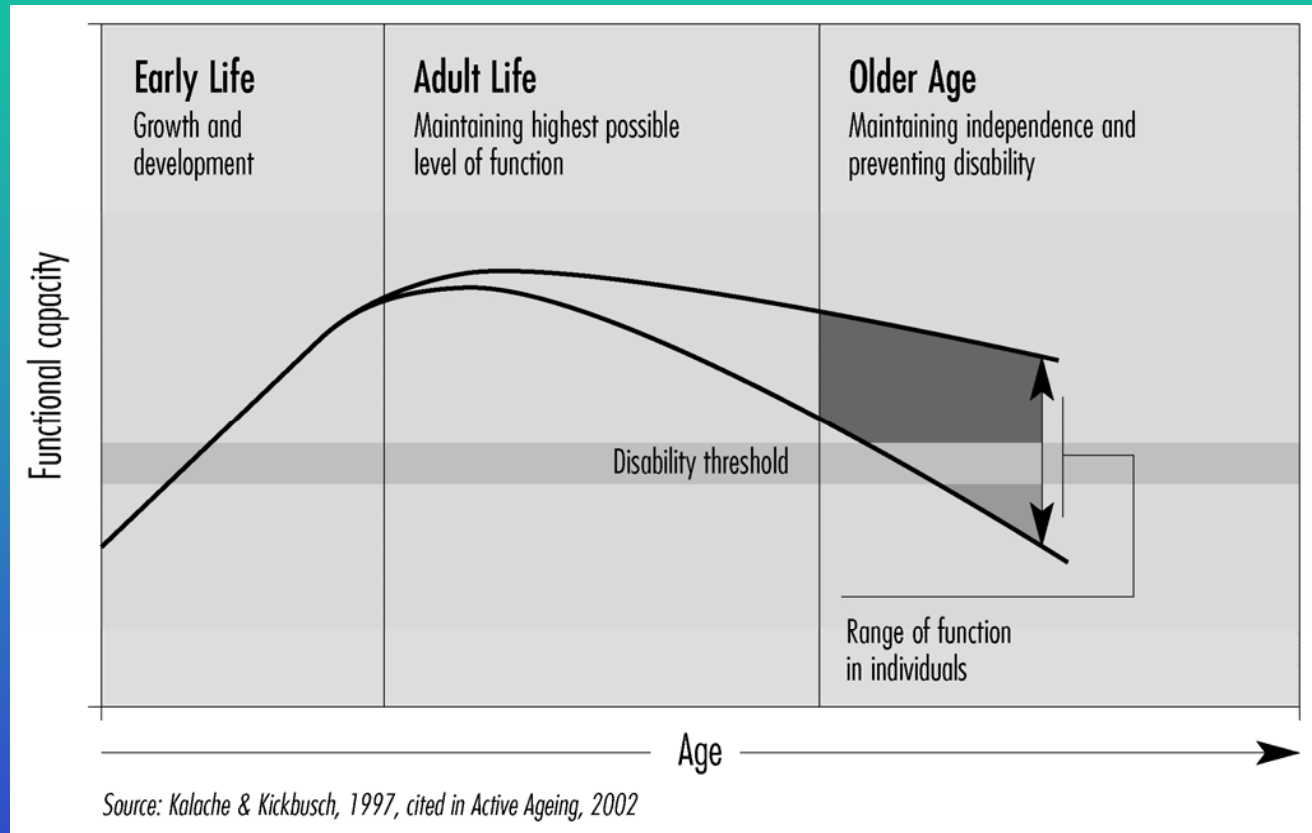
# Impact of Housing Interventions

Acheson: 1998



# Adding Years to Life

## A life course approach



'helps maintain physical and mental capacity in later life'



# Powers and Competences

Turkey = Kosecik & Sagbas: LGS, 2004

## City Government

---

- Urban Planning
- Public Transport
- Housing regulation
- Food markets
- Parks
- Rubbish

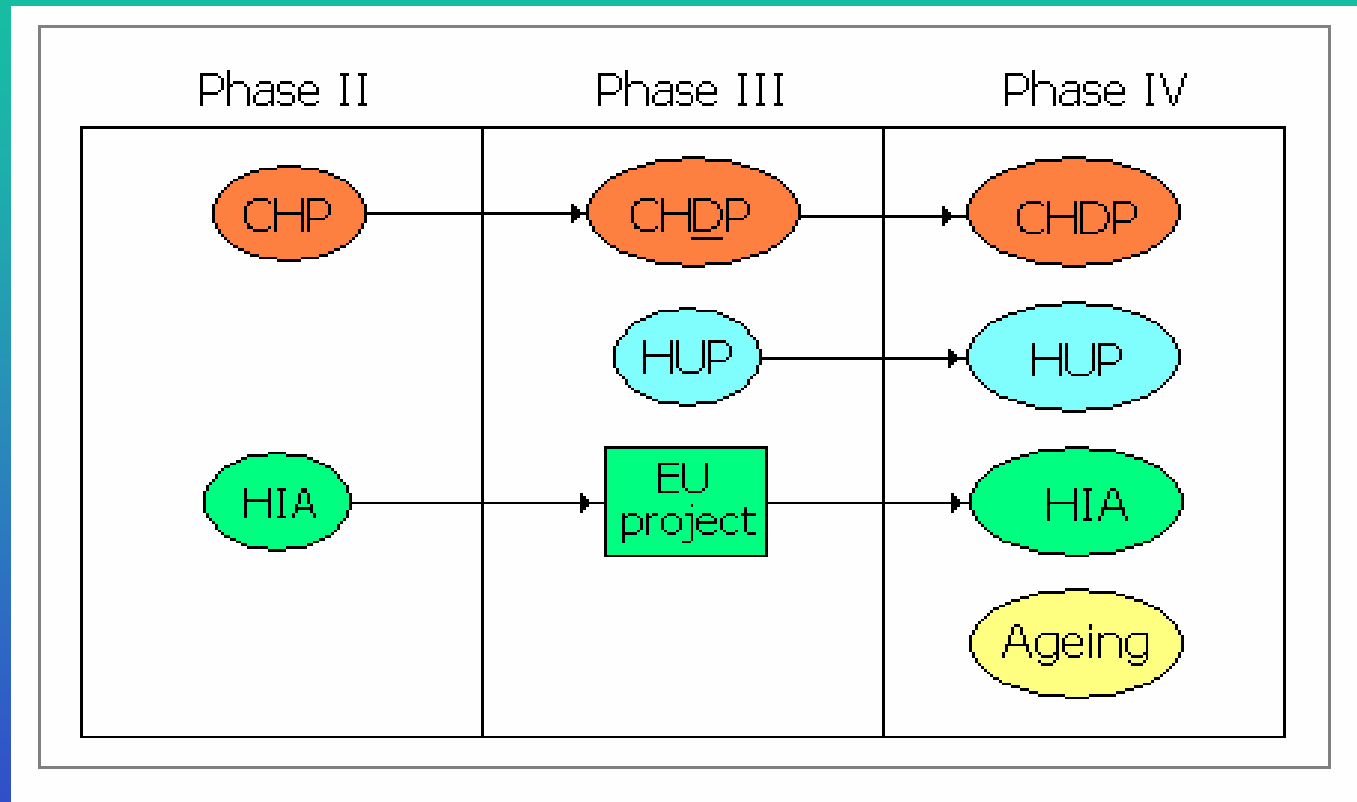
## Central Government

---

- Schools
- Health
- Security
- Power

# Healthy Cities Network

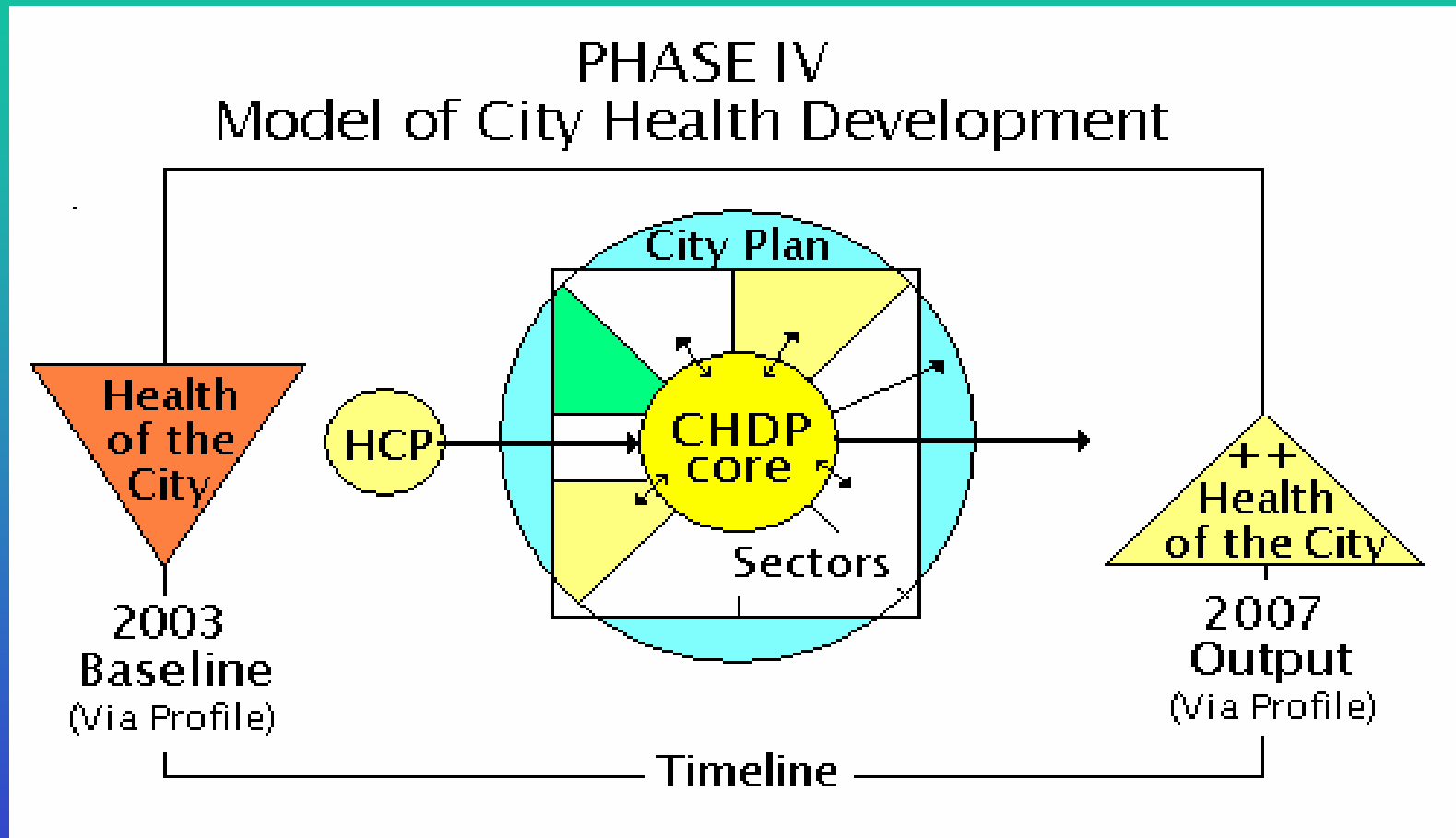
## Evolution of CHDPs



'emphatically not about health service planning'

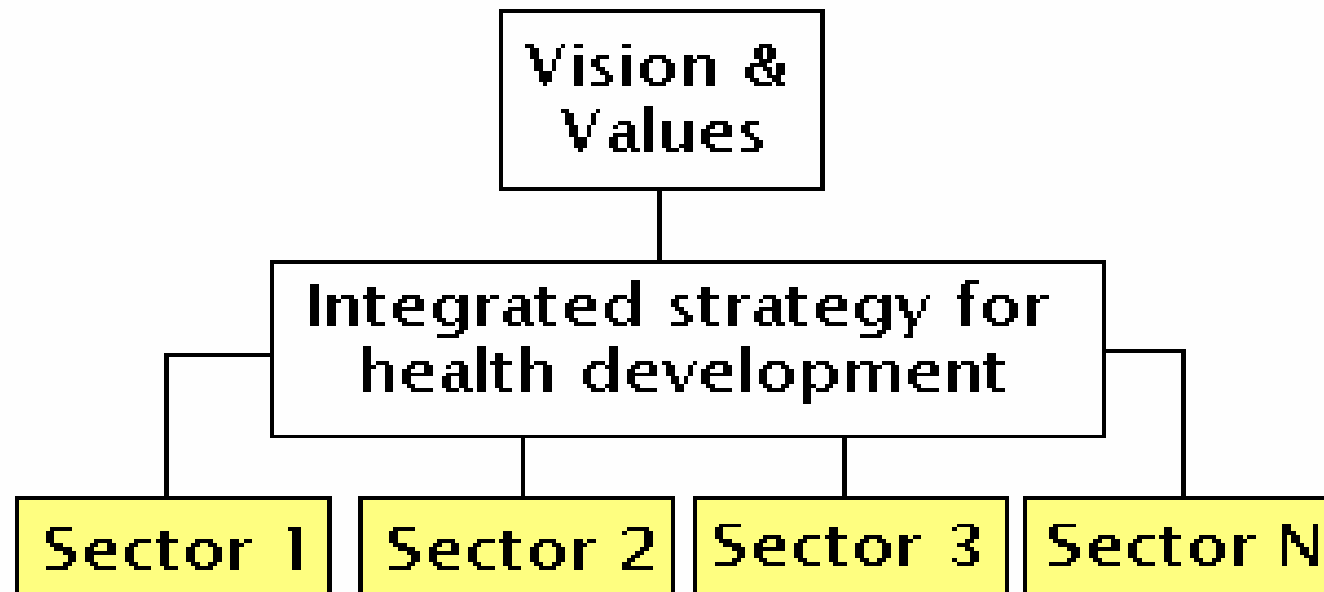
# City Health Development Planning

## Addressing Intermediate determinants



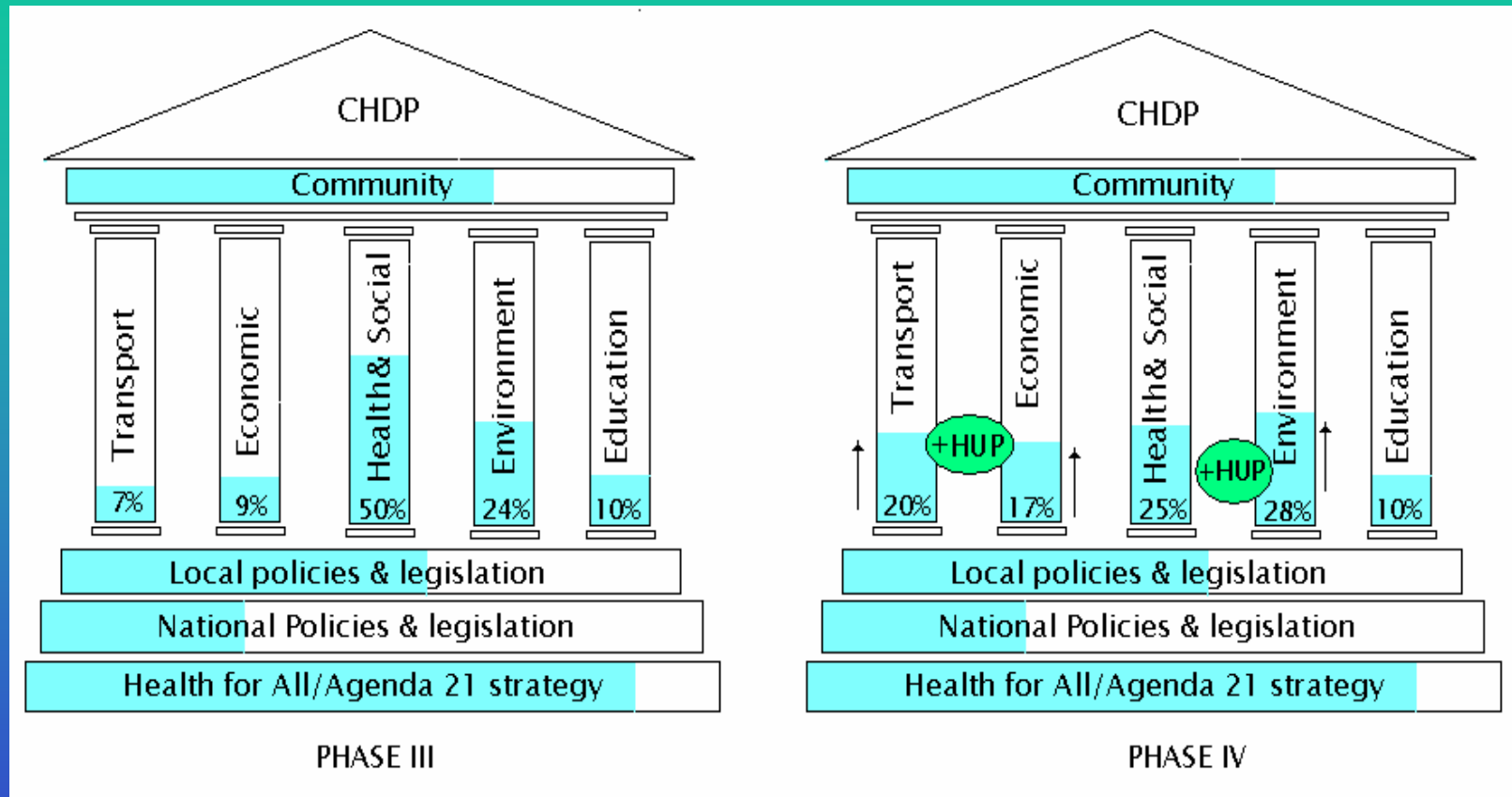
'With sector partners'

# City Health Development Plan Content



# Healthy Urban Planning

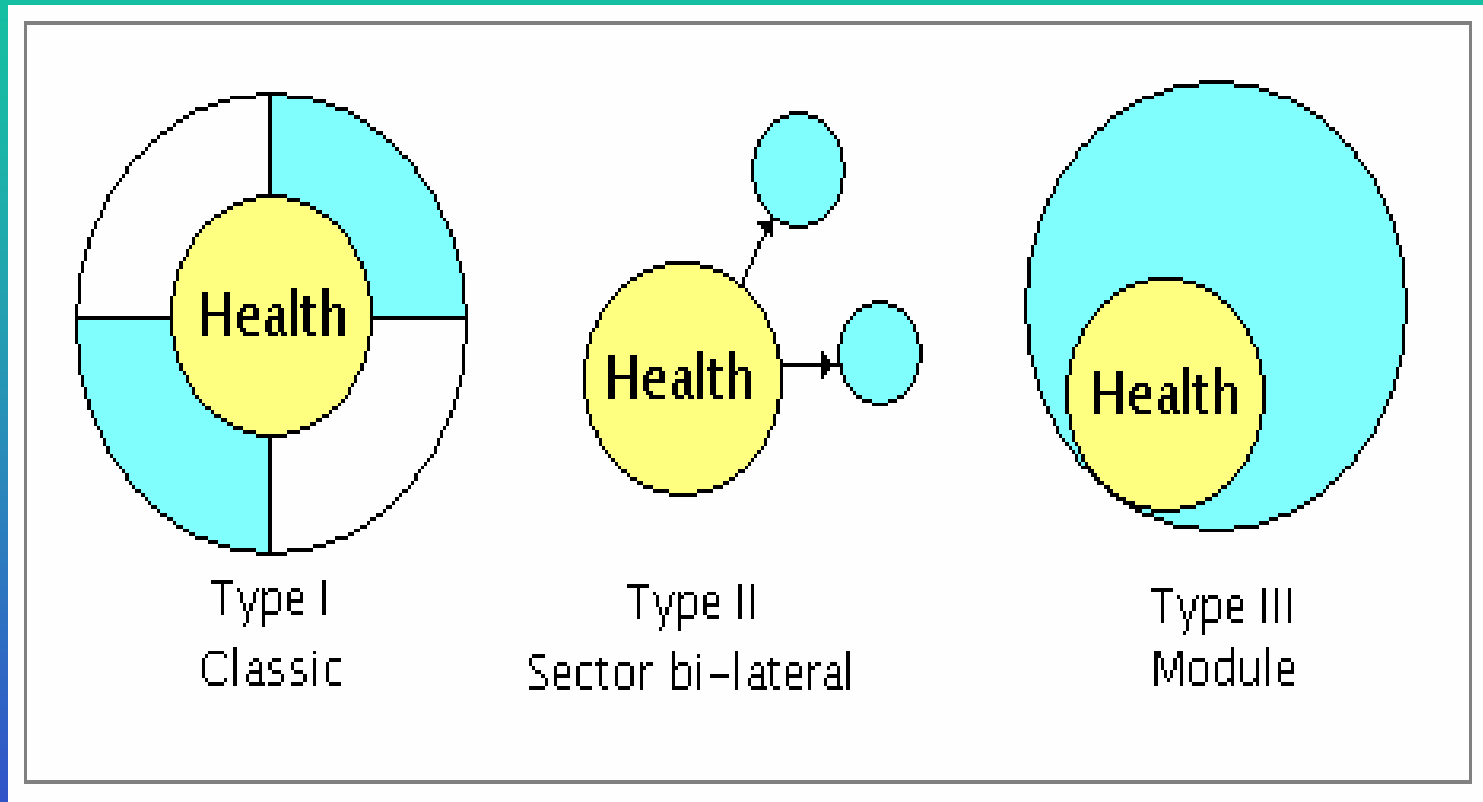
## Rebalancing CHDPs



'away from traditional health promotion'

# *Realpolitik 1*

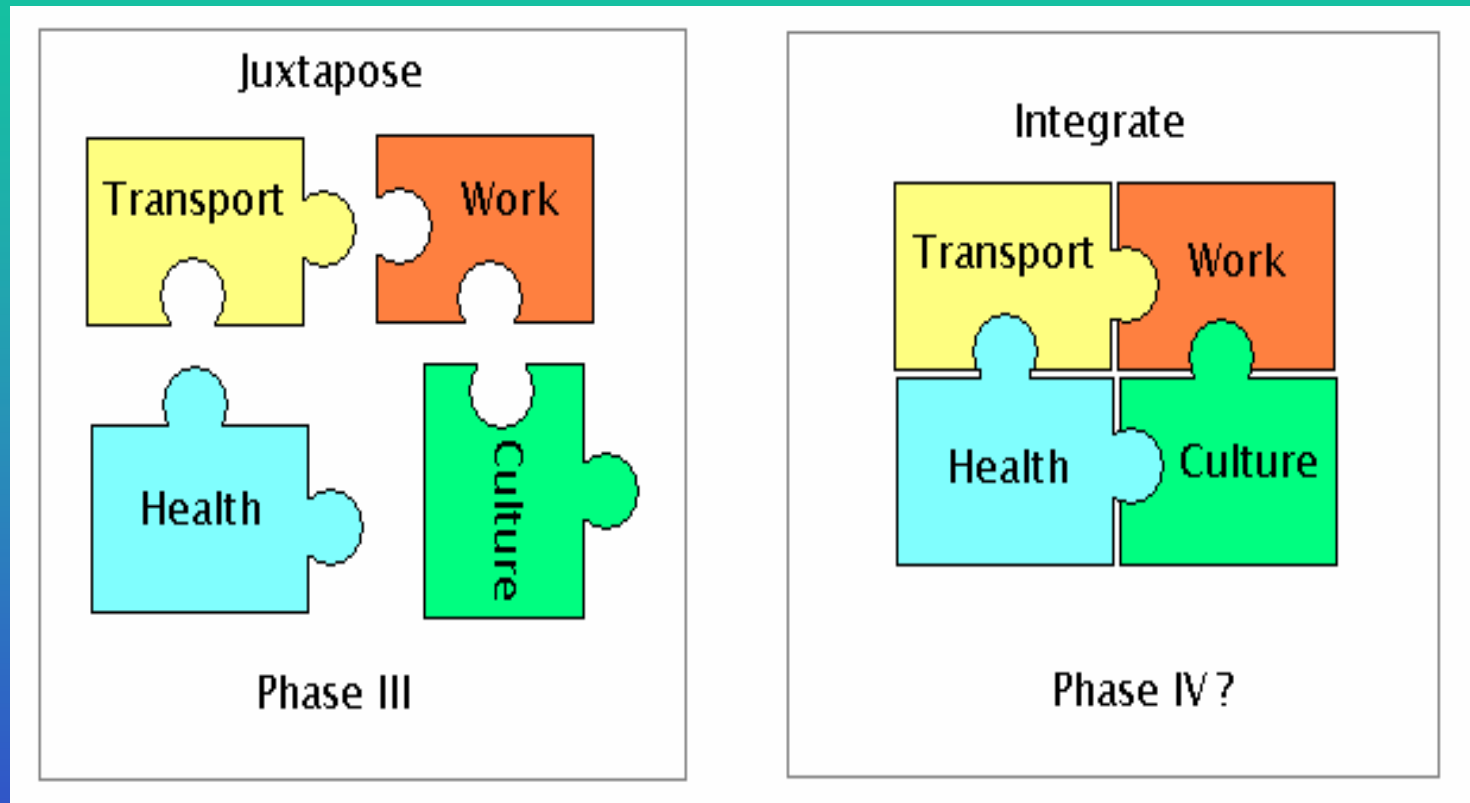
'Health is not first priority  
for most partners'



'CHDPs must harmonise with other plans'

# *Realpolitik 2*

## Lists are not sufficient

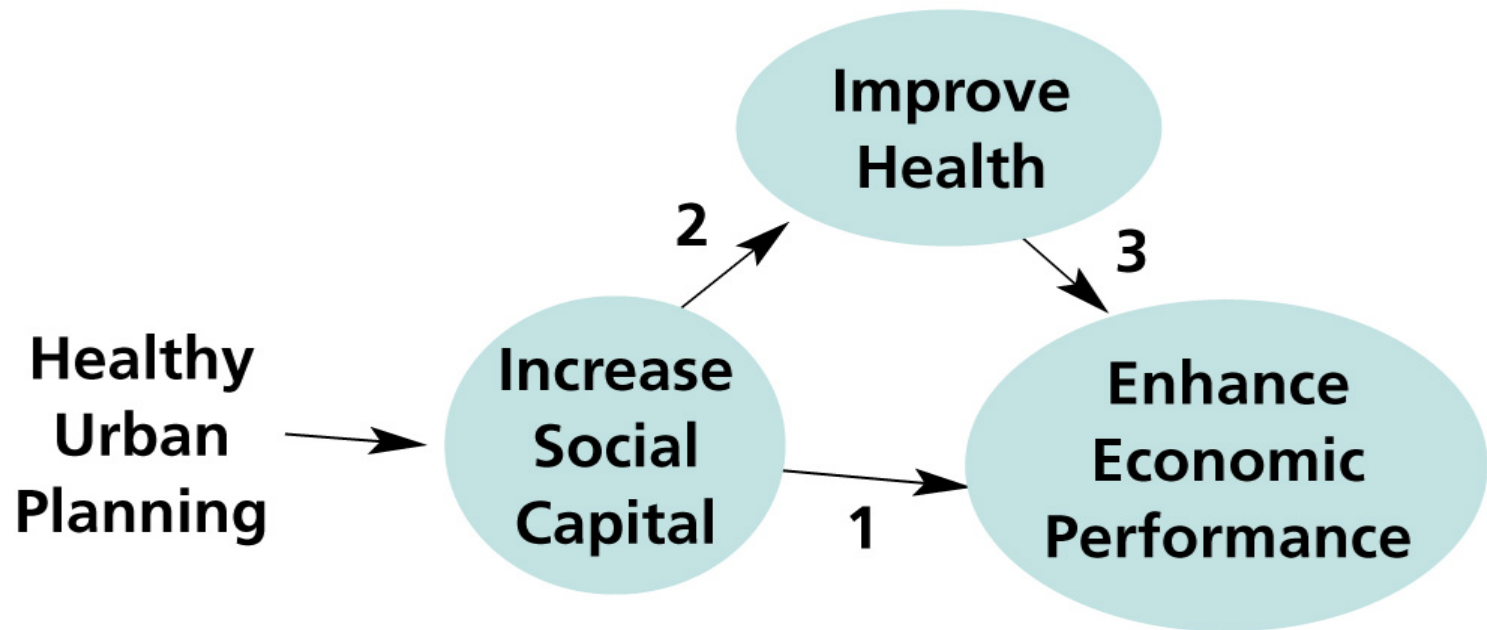


## Integration is necessary



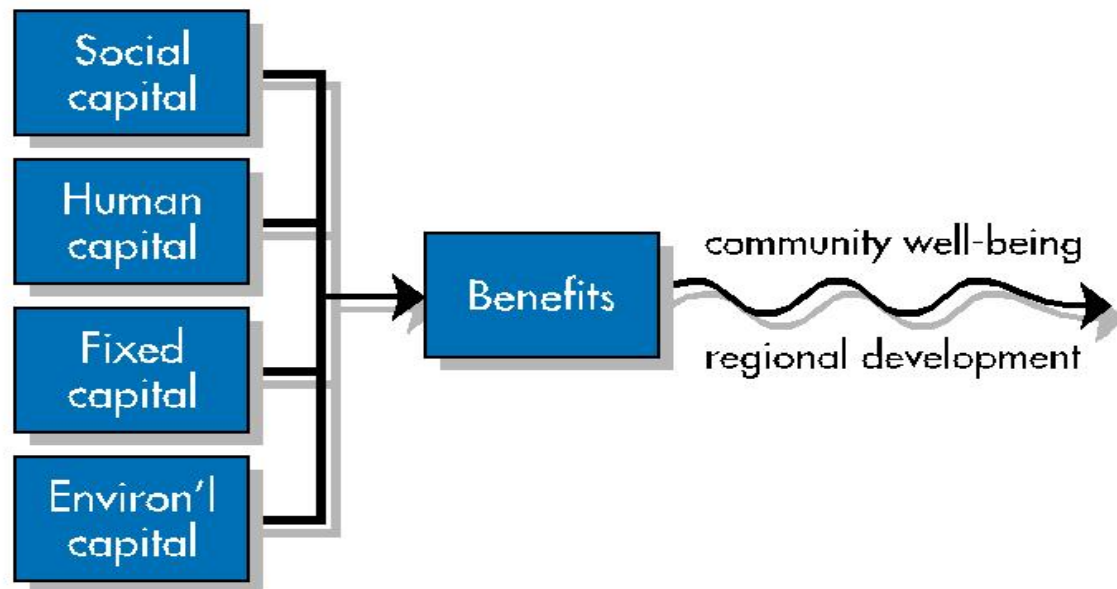
# *Realpolitik 3*

City Mayors may favour economic growth over equity & health



**Show** them how health promotes economic development

# Health is Human Capital



ref. World Bank

'one of 4 Capitals necessary for sustainable development'

# References

1. Donald Acheson.(1998) *Independent Inquiry into Inequalities in Health Report*. The Stationary Office. London
  2. Dalgren & Whitehead (1992) *Policies and strategies to promote equity in health*. WHO Regional Office for Europe. Copenhagen
  3. Jan Gilbertson, Geoff Green, David Ormandy (2006) *Decent Homes: Better Health*. CRESR. Sheffield Hallam University.
  4. Alexandre Kalachie & Ilona Kickbush in (2002) *Active Ageing: A policy framework*. WHO. Geneva
  5. Muhammet Kosecik & Isa Sagbas (2004) Public Attitudes to Local Government in Turkey: Research on Knowledge, Satisfaction and Complaints. *Local Government Studies*, 30:Vol 3: 360–383.
  6. Margaret Whitehead (2007) A typology of actions to tackle social inequalities in health. *Journal of Epidemiology and Community Health*. Vol. 61: 473–478.
  7. Urban Task Force (1999) *Towards an urban renaissance*. Spon/HMSO. London.
-